



Welcome to the Project TEACH (Trained Empowered Advocates for Community Health) online education course! We're excited for you to get started.

The team at Project TEACH has designed this course to be as intuitive and easy to use as possible. That said, we want to make sure you can focus on learning and not on navigating through the course. Read our course primer below before you start or when you run into any issues! It will also be available during the course in the top right corner as "Course Navigation."

1. **General navigation** – As you read through the course, look for the arrows in the bottom right-hand corner of the screen to advance to the next slide or return to the previous. as indicated in the picture below with a red circle.

Project TEACH

FEEDBACK NEXT MODULE EXIT

Project TEACH

GLOSSARY RESOURCES MAIN MENU

What is Cancer?

Cancer is a relatively **common** type of **disease**: nearly 14 million people living in the United States have been diagnosed with a cancer at some point in their lives.

While **incidence rates have increased** over the last few decades, advances in treatment have significantly **improved survival** rates.

1.6 MM
Americans were diagnosed with cancer in 2014

< >

Also notable links for navigation include the top right button to navigate back to the main menu if needed (green circle) and the hamburger icon in the top left (blue circle). The bottom-most icon will open up/close the official course menu. While you won't be able to navigate ahead in the course until you complete each section, it will help you navigate between sections once completed. The titles of each slide will be lightly grayed out when completed so you can check your progress.

2. **Pop-up boxes** – Various slides will have pop-ups that include either a description of what you are viewing and/or directions on how to navigate the information. To get rid of those pop-ups once you've read, just click the X in the top right corner beside the box, as shown below:

The screenshot shows a slide titled "Safety & Efficacy" with a blue header. The main content area is white with a blue border on the right. It contains a bulleted list and a photograph of pills. A red circle highlights a close button (an 'X' icon) in the top right corner of the slide, with a red arrow pointing to it from the right. The background of the slide is a dark grey with a vertical bar on the left side consisting of purple and orange segments.

Safety & Efficacy

- **Safety and Efficacy of Trials:** Reinforcement about the safety in participating in clinical trials and there being no danger of receiving a placebo):
 - Due to regulations passed into law, no longer are participants in danger of receiving a [placebo](#).
 - You'll learn more about the rigorous safety process the FDA maintains in Module 2 – FDA 101.

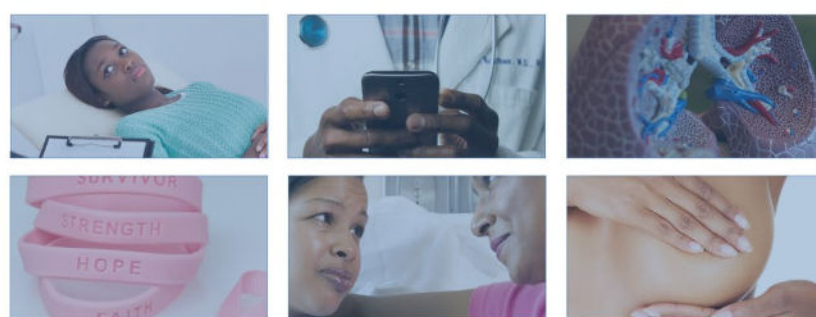


3. **Clickable objects** – As you progress, many boxes, circles, and tiles will be clickable. On those slides, we will clearly indicate the action you need to take, as shown below. If you need to go back to the information, just click the object again and the original text will re-load.

The screenshot shows a slide titled "How Does It Impact You?" with a blue header. The main content area is white with a blue border on the right. It contains a paragraph of text and a grid of six images. A red arrow points to a text box at the bottom of the grid that says "Click on each picture to learn more about the impact of cancer". The background of the slide is a dark grey with a vertical bar on the left side consisting of purple and orange segments.

How Does It Impact You?

While cancer takes a heavy toll on all Americans, research shows that **Black women are at greater risk** than white women of developing or dying from certain cancers, including those of the breast, colon/rectum, lungs and cervix.



[Click on each picture to learn more about the impact of cancer](#)

(Source American Cancer Society's Cancer Facts & Figures for African American 2019-21. National Cancer Institute (2019).

4. **Vocabulary words** - Various words throughout the course are highlighted and underlined as vocabulary terms with more information. Simply hover over the term and a box will pop-up with a definition and/or explanation. You can find all these terms in the glossary located on the upper right-hand corner of the course.

Project TEACH

GLOSSARY RESOURCES MAIN MENU

Hover your mouse over the term

Clinical Trials

And a box will appear with the definition

- **Clinical trials** are the backbone of medical research, testing medical products to prove their safety and efficacy of each treatment before broad public use.
- **The U.S. Food and Drug Administration (FDA)** oversees the clinical trial system and its phases of development for each product.
- **It is critical** for clinical trials to include diverse participants in order ensure results are applicable to general population

In your third module, "Bench to Bedside," we'll dive deep into how clinical trials work, teaching you important terminology you need to know as an effective advocate.

▶ ◀ ▶

5. **You can leave your place and come back to the course at any time.** If you cannot complete the course in one sitting, you will be able to start again at the same place as before. Just log back into your profile, go to the course again and you will see the screen below, allowing you to resume at your same place.

Project TEACH

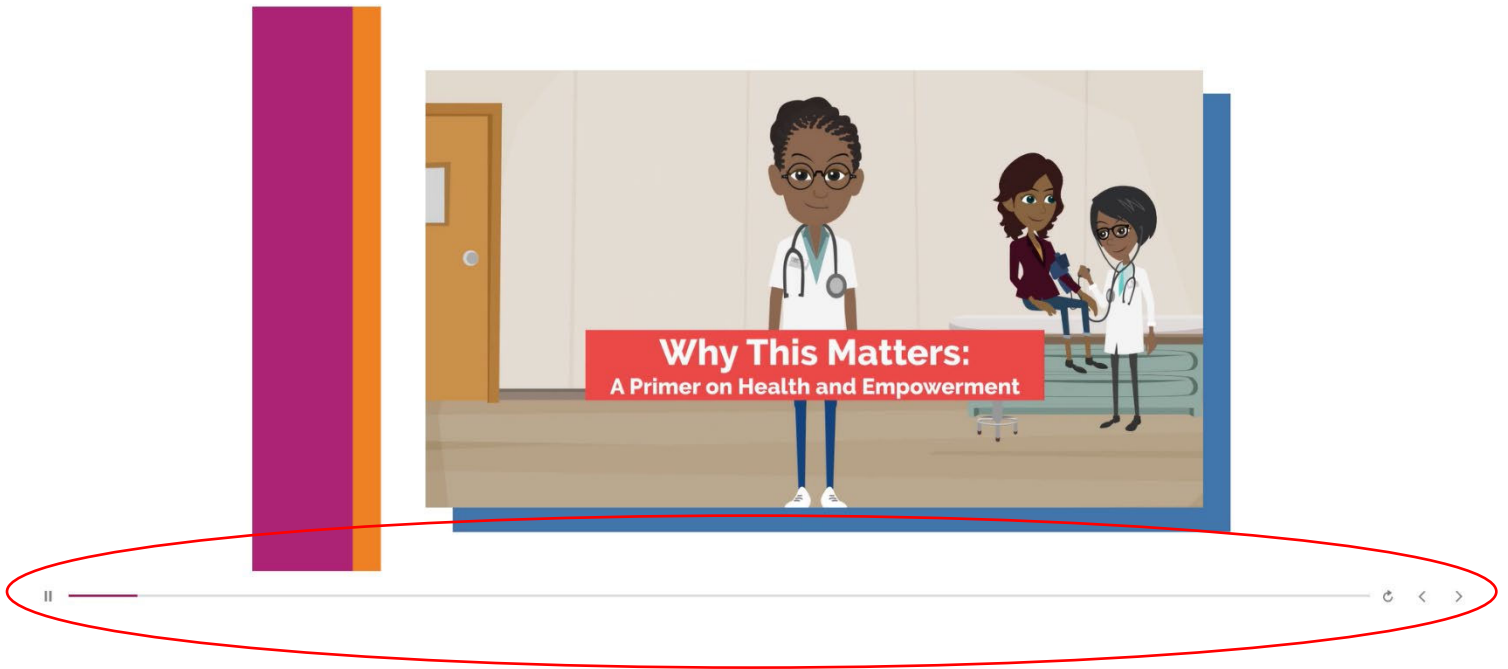
GLOSSARY RESOURCES MAIN MENU

▶ Resume

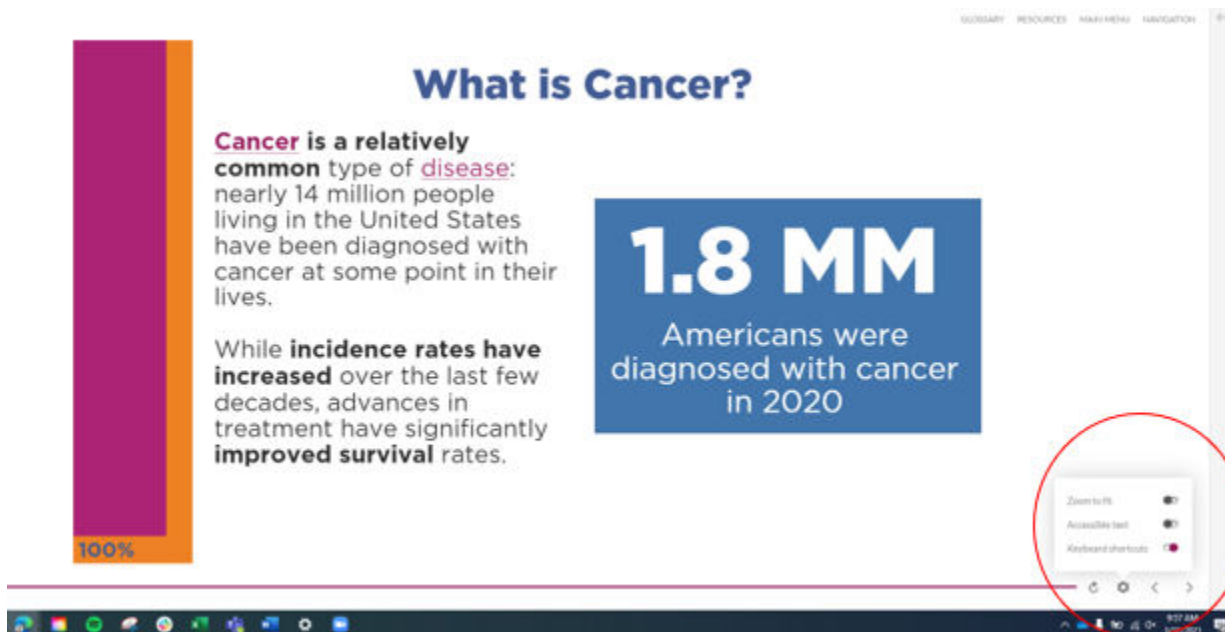
Restart

▶ ◀ ▶

6. **There are various videos that will play throughout the course.** These videos will play automatically, but you can restart or pause using the buttons at the bottom of the page. You'll notice the purple line at the bottom of the screen which shows how much time is left for the video.



7. **Are slides too small?** While for most users on a desktop, laptop, or tablet the text may appear at an easy to read size, you may still want to zoom in at various points to make sure you can focus properly on your screen. To do so, in the bottom right-hand corner of the slide, you'll see a settings gear. Click on that and a Zoom to fit option and an accessible text option will appear. Adjust further by hitting CTRL+ALT+Z on your keyboard and scrolling with your mouse to increase and decrease the size.



- 8. If all else fails** - As a general rule, if you get stuck, select and read through all clickable items on a slide before attempting to advance. If you still are having trouble, please feel free to email jpatterson@focr.org or call (202) 944-6709.

Thank you and we hope you enjoy the course!